

Quick Start Guide

Tapo Smart Video Doorbell Wired

*Images may differ from your actual product.
©2023 TP-Link 7106510017 REV1.0.0

Before You Start

WARNING: Risk of Electric Shocks

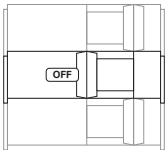
- Ensure that your existing doorbell works by ringing the doorbell.
- Locate your existing doorbell chime.
- Make sure the doorbell is in an area with a strong Wi-Fi signal.
- Disconnect power at the fuse or circuit breaker before installing.
- You can always find detailed wiring and installation instructions in the Tapo app.



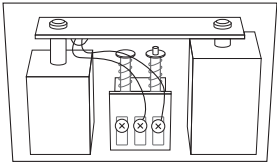
01 / Install Jumper Wire for Your Existing Chime

⚠ Take care to avoid electric shocks.

1. Turn off the circuit breaker. Make sure the power is off by ringing your doorbell a few times.

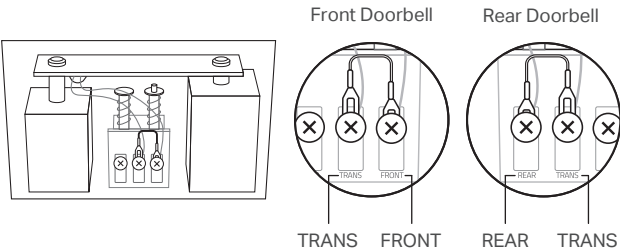


2. Remove the chime cover and take a photo of the wiring in case you want to reconnect it.



3. Slightly loosen the screws for the **Front** and **Trans** of your **front** doorbell or the **Rear** and **Trans** of your **rear** doorbell, then insert the jumper wire.

Note: If your doorbell chime has different markings, refer to instructions in the Tapo app or consult a licensed electrician.

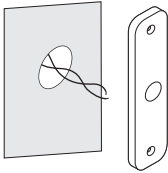


4. Tighten the screws and replace the chime cover.

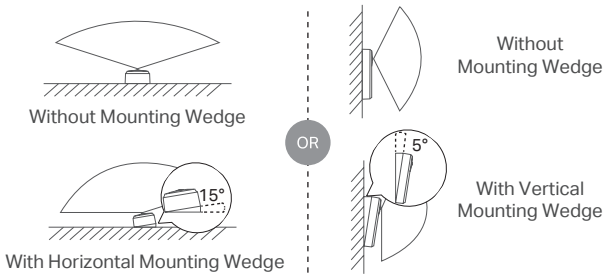
02 / Preparations for Installing Your Doorbell

1. Remove your existing doorbell on the door. Disconnect the wires.

⚠ Take care to avoid electric shocks.



2. (Optional) Select the mounting wedge to adjust the viewing angle of the doorbell.



03 / Install Your Doorbell

⚠ Take care to avoid electric shocks.

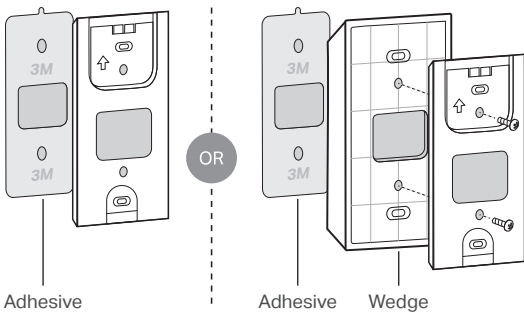
*Recommended Installation Height: 1.2 m (4 ft) above the ground

Option 1. Stick to a clean wall

*This equipment shall be installed at a height of fewer than 2 meters.

1. Attach the included adhesive to the back of the bracket or the wedge you have selected. If you use the wedge, affix the bracket and the wedge with screws.

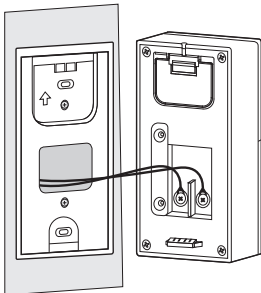
Note: This is applicable with tile, glass, marble, metal, stainless steel, and hard wall surfaces.



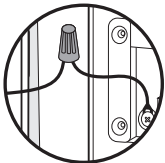
2. Route the wires through the bracket. Stick the bracket with adhesive to a clean wall.

3. Connect the wires to the two terminals at the back of the doorbell, and tighten the terminal screws.

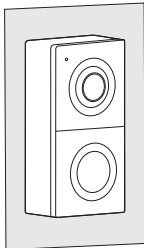
Note: If the wires are too short, use the included extension wires and wire nuts to make them longer.



If the wires are too short:

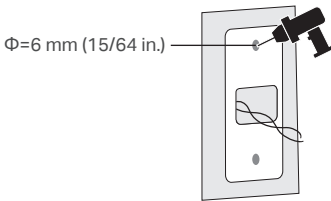


4. Mount the doorbell to the bracket and turn on the circuit breaker.



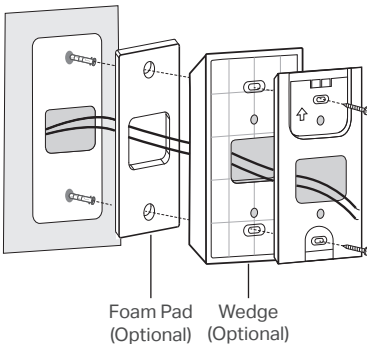
Option 2. Mount to the wall

1. Route the wires through the mounting template and stick the template. Drill two holes where indicated.



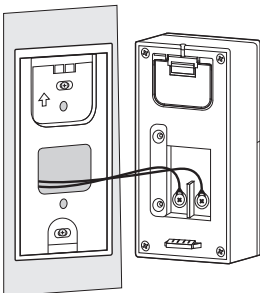
2. Route the wires through the bracket. Insert two anchors into the holes and use the screws to affix the bracket over the anchors.

Note: When mounting to uneven walls, stick the foam pad on the back of the bracket or wedge.

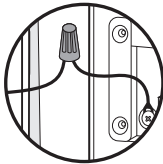


3. Connect the wires to the two terminals at the back of the doorbell, then tighten the terminal screws.

Note: If the wires are too short, use the included extension wires and wire nuts to make them longer.



If the wires are too short:



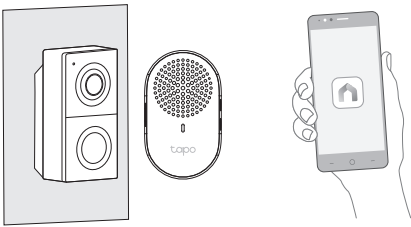
4. Mount the doorbell to the bracket and turn on the circuit breaker.

04 / Set Up Your Doorbell and Chime

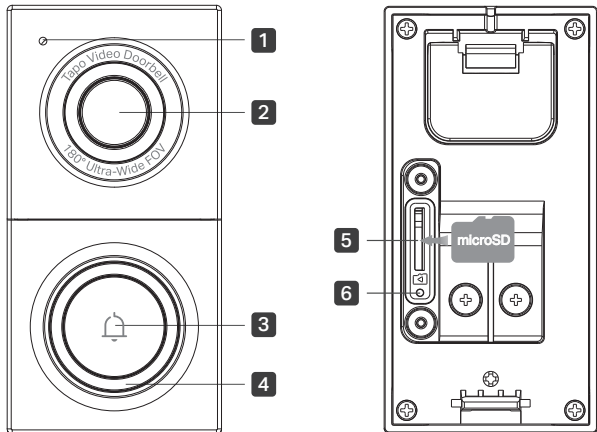
1. Download the Tapo app from the App Store or Google Play. Open the app and log in with your TP-Link ID. If you don't have an account, create one first.



2. Tap the button in the app and select your model. Follow the instructions in the Tapo app to set up your doorbell. Then plug in your chime and pair with the doorbell.



Doorbell Appearance



- 1

Microphone
- 2

Lens
- 3

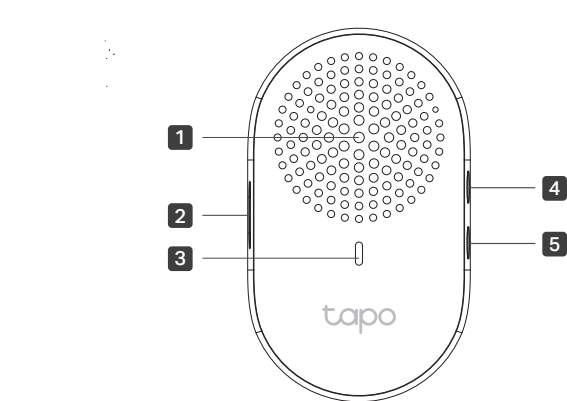
Ring Button
- 4

LED
- 5

microSD Card Slot
- 6

Reset Button

Chime Appearance



- 1

Speaker
- 2

Reset Button
- 3

LED
- 4

Volume Button
- 5

Music Button

Doorbell Slot & Button Explanation

microSD Card Slot
Loosen the screws and insert a microSD card for local recording.
*microSD card not included.

Reset Button
• Use a pin to press and hold for **5 seconds**: Reset Wi-Fi settings
• Use a pin to press and hold for **10 seconds**: Reset to factory settings

Chime Button Explanation

Reset Button
• Press and hold for **5 seconds**: Reset Wi-Fi settings
• Press and hold for **10 seconds**: Reset to factory settings

Volume Button
Press to adjust the volume of the ring.

Music Button
Press to cycle through different ringtones.

Doorbell LED Indication

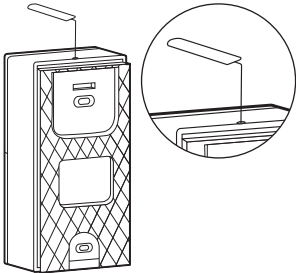
Solid red	Starting up
Blinking red and green	Ready for setup
Blinking red slowly	Connecting to Wi-Fi
Solid amber	Connected to Wi-Fi
Solid white	Connected to the cloud
Blinking green quickly	Doorbell updating
Blinking red quickly	Doorbell resetting

Chime LED Indication

Solid red	Starting up
Blinking red and green	Ready for setup
Blinking red slowly	Connecting to Wi-Fi
Solid amber	Connected to Wi-Fi
Solid green	Connected to the cloud
Blinking green quickly	Chime updating
Blinking red quickly	Chime resetting

How to Detach Doorbell

Use the doorbell detaching pin provided if you wish to detach the doorbell from the mounting bracket.



Need some help?
Visit <https://www.tapo.com/support/>
for technical support, the user guide, FAQs,
warranty & more

Safety Information

- Do not use the device where wireless devices are not allowed.
 - Keep the device away from fire or hot environments. DO NOT immerse in water or any other liquid.
 - Do not disassemble, repair or modify the product.
 - Do not use the product if the casing has been broken. Danger of electric shock.
 - Never touch the product with wet hands.
 - Do not place near automatically controlled devices such as fire alarms. Radio waves emitted from this product may cause such devices to malfunction resulting in an accident.
 - Observe restrictions on using wireless products in fuel depots, chemical plants or when blasting operations are in progress.
 - Do not use liquid to clean the product. Only use a dry cloth.
 - Never put metal objects inside the product. If a metal object enters the product turn off the circuit breaker and contact an authorised electrician.
 - This product is not intended to be used when providing medical care. Consult the manufacturer of any personal medical devices, such as pacemakers or hearing aids to determine if they are adequality shielded from external RF (radio frequency) energy.
 - Do not use this product in health care facilities. Hospitals or health care facilities may be using equipment that could be sensitive to external RF energy.
 - Do not use this product near water for example near a bath tub, wash bowl, kitchen sink or laundry tub, in a wet basement or near a swimming pool.
 - The product should be kept free from excessive smoke, dust or high temperature and vibration.
 - This product should not be exposed to direct sunlight
 - Do not place heavy objects on top of the product.
 - This product may interfere with other electronic products such as TV, radios, personal computers, phones or other wireless devices.
 - This equipment can be powered only by equipment that complies with Power Source Class 2 (PS2) or Limited Power Source(LPS) defined in the standard of IEC 62368-1.
 - Doorbell Operating Temperature: -20 °C ~ 45°C (-4°F ~ 113°F)
 - Chime Operating Temperature: 0 °C ~ 40°C (32°F ~ 104°F)
- Please read and follow the above safety information when operating the device. We cannot guarantee that no accidents or damage will occur due to improper use of the device. Please use this product with care and operate at your own risk.

TP-Link hereby declares that the device is in compliance with the essential requirements and other relevant provisions of directives 2014/53/EU, 2009/125/EC, 2011/65/EU and (EU)2015/863.
The original EU declaration of conformity may be found at <https://www.tapo.com/support/ce/>
TP-Link hereby declares that the device is in compliance with the essential requirements and other relevant provisions of the Radio Equipment Regulations 2017.
The original UK declaration of conformity may be found at <https://www.tapo.com/support/ukca/>

